

**Donna Shepard**

**Morning Arrival & Dismissal Procedures 2016-2017**

**On the Same Page**

**The safety of your child is our number one priority. I have listed some concerns that I need your help with and to be aware of so that we can continue to partner together in order to ensure that your student is arriving and leaving school safely.**

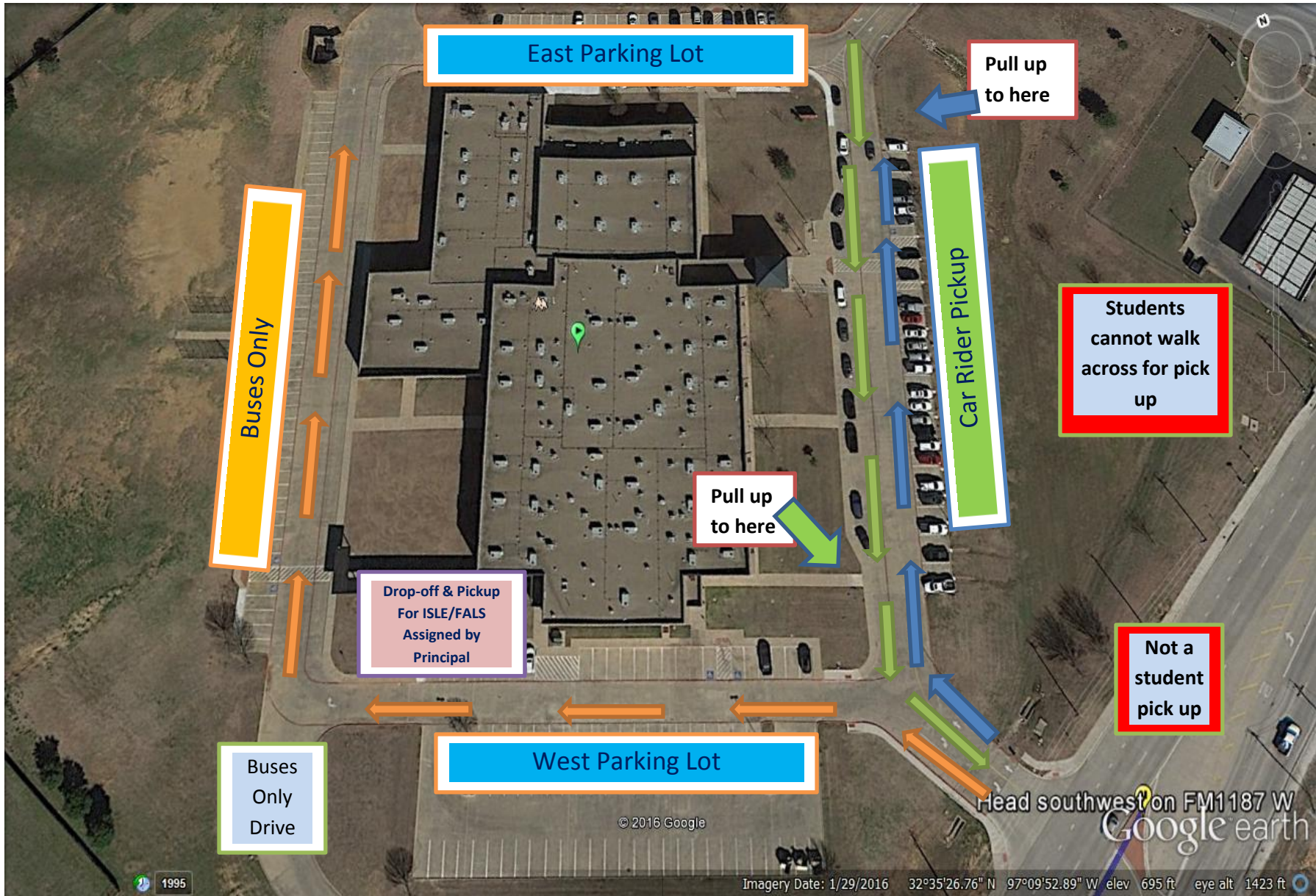
- There are students being picked up on Debbie Lane (high safety issue).
- There are parents not walking up to pick up kids when they park.
- There are students walking across to the gas station to be picked up.
- There are students not adhering to dismissal procedures by persons of authority due to parents not following our set procedures and or encouraging the students to follow the procedures.
- There are parents not pulling up to the farthest end of the side walk when picking up students (this allows for more cars to come off the street).
- Cars are driving too fast when leaving the parking lot.
- There are parents on the cell phone which is causing a concern for arrival and dismissal regarding student safety.
- There are students arriving to school around 7:00am-7:15am which is way too early without adult supervision (early arrival is available at 7:30am).
- There have been parents behind the school during drop off and pick up where the buses are. There should be no cars behind the building during those times.
- Parents can pull up pass the cross walk to have students enter the car (this allows for more cars to come off the street)

## Donna Shepard

### Morning Arrival & Dismissal Procedures 2016-2017

Please use the following information with the Arrival & Dismissal Map.

- **Arrival** – Students will be allowed to enter the building at 8:00. There is supervision outside of the building starting at 7:30 a.m. (due to weather changes students will be allowed inside)
- Students in **ISLE and FALS** will have a designated drop-off and pick-up in the back where the buses are to unload and load.
- **Dismissal** – Students will be released this year at 4:00pm. Students who are picked up will be located on the front lawn. All **5<sup>th</sup> grade** students are on the east lawn and **6<sup>th</sup> grade** students are on the west lawn. Please look for **Team Signs** (**get familiar with your student's Team name**) when you are trying to locate your student.
- There will be no parking allowed in the front of the building, however if you choose to park in the west or east parking lot you must come get your student. We will not be dismissing students to go to the parking lots due to safety concerns.
- Please refrain from driving on the north side of the building for that area is for bus pickup only.



East Parking Lot

Pull up to here

Buses Only

Car Rider Pickup

Students cannot walk across for pick up

Pull up to here

Drop-off & Pickup For ISLE/FALS Assigned by Principal

Not a student pick up

Buses Only Drive

West Parking Lot

Head southwest on FM1187 W  
Google earth

© 2016 Google

Imagery Date: 1/29/2016 32°35'26.76" N 97°09'52.89" W elev 695 ft eye alt 1423 ft

1995